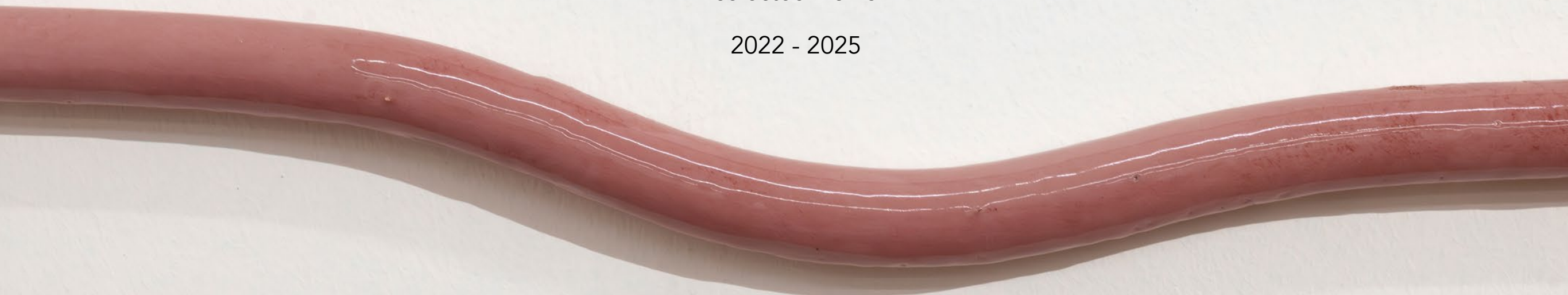


Enrique Lanz Jiménez

selected works

2022 - 2025



Statement

Shifting between painting, drawing, and ceramics, I explore domestic space. In my practice, I'm interested in the trapped entities in it –animals, objects, patterns–compelled to follow human-centered logics and hierarchies.

My work unfolds through intersubjective relationships among what I call **domestic entities**. I aim to blur the boundaries between the animate and the inanimate, establishing a dialogue that engages with the multiple domestic ecosystems we inhabit, their materialities, and the everyday experiences that give them form.

My practice is shaped by my upbringing in Ciudad Satélite, *an overgrown suburb devoured by Mexico City*, and my current life in Switzerland. This shift informs my attention to scale, adaptation, and the silent anthropocentric codes that structure our environments.



Simón en un momento post-digestivo, 2025

Oil and crayon on canvas
49 x 84 cm



zorrito pipí, 2025
Oil on canvas
49 x 60 cm



Flesh Anecdote, 2023
Oil and crayon on canvas
150 x 190 cm





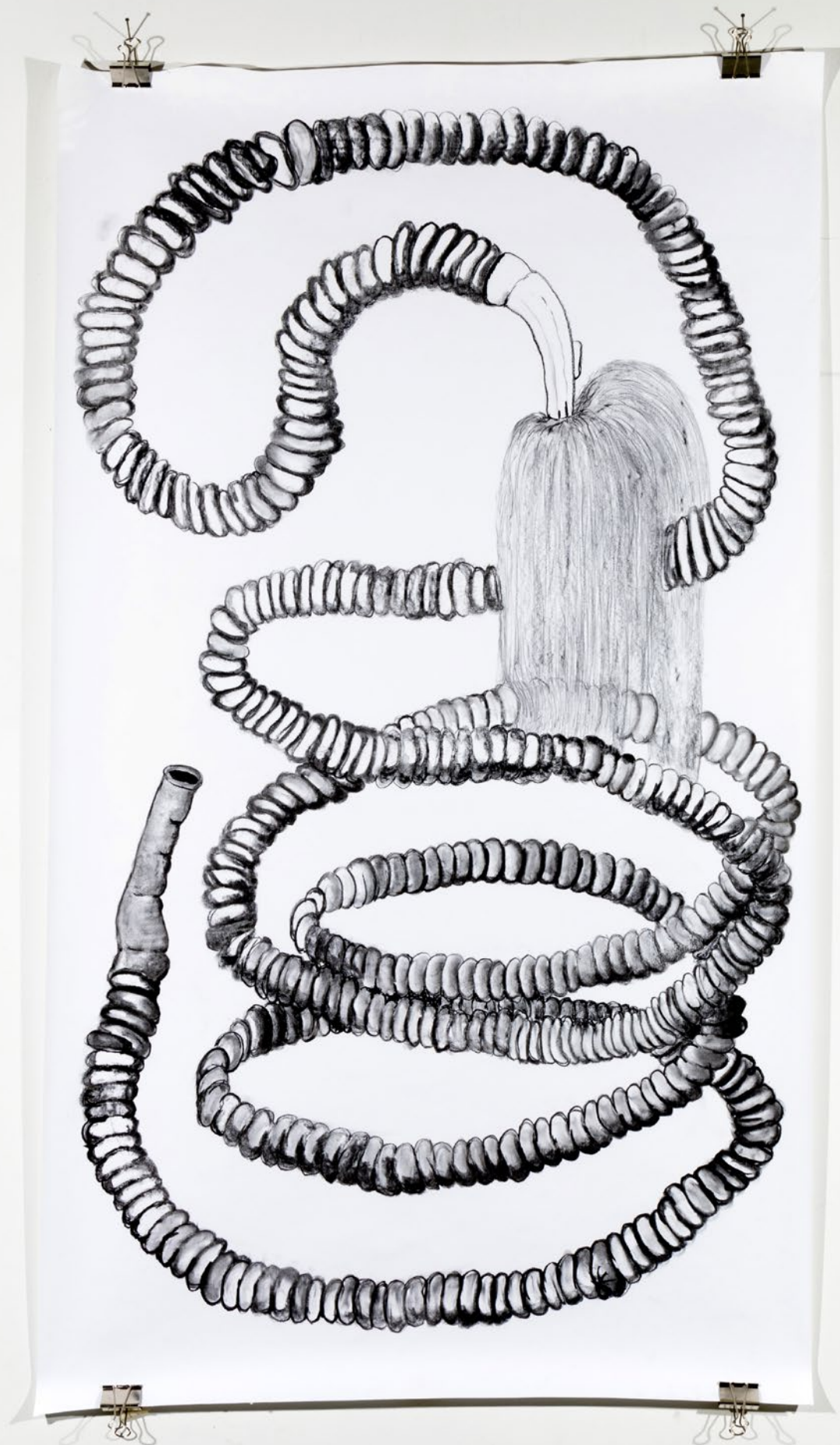
Roasted and Crispy, 2023
Oil and crayon on canvas
105.2 x 135 cm



Fried In and Out, 2023
Oil on canvas
105.2 x 135 cm



Cat Wig, 2022
Oil on canvas
105.2 x 135 cm



La Amplificación, 2025
Charcoal on paper
173 x 70 cm



Pistola de Aire, 2024
Oil on canvas
21 x 30 cm



Alte Mikrowelle, 2024
Oil on canvas
30 x 21 cm



Bügeleisen, 2024
Oil on canvas
21 x 30 cm



I Don't Remember Who Gave Me This, 2022

Oil on canvas
110 x 70 cm



iron and nipple, 2022
Oil on plywood
105 x 84.5 cms



patita transversal, 2024
Oil on canvas
70 x 50 cm



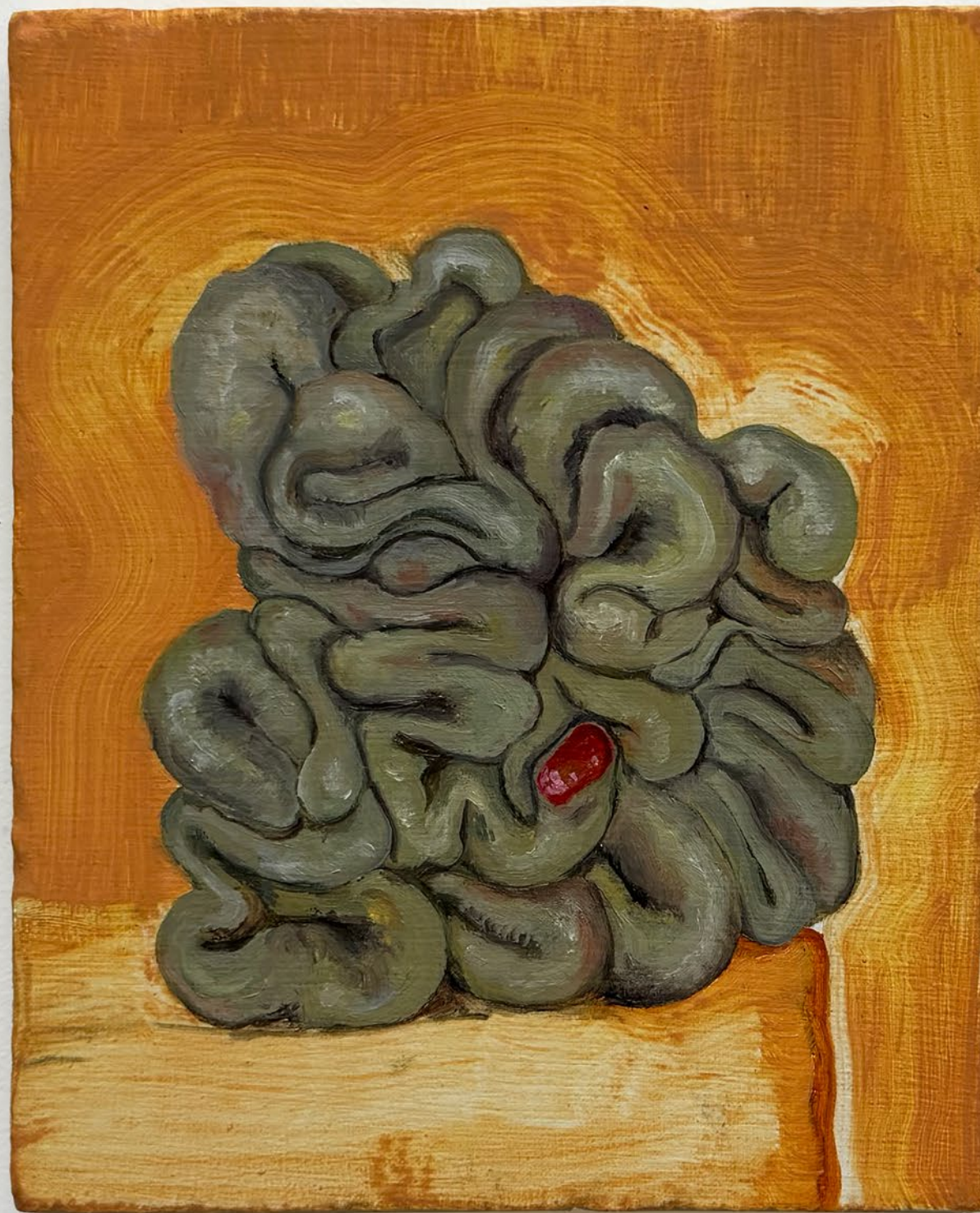
Little Creature, 2023
Oil on canvas
101.5 x 70 cm



Little Creature 2, 2023
Oil on canvas
30 x 30 cm



lenguita, 2025
Oil on canvas
70 x 50 cm



Whirlpool #2, 2023
Oil on canvas on plywood
20.5 x 16.8 cm



Whirlpool #3, 2023
Oil on canvas on plywood
21 x 18 cm



Whirlpool #4, 2023
Oil on canvas on plywood
17 x 18 cm



Whirlpool, 2023
Oil on canvas
70 x 50 cm



Whirlpool Mom 2, 2023

Oil on canvas
70 x 50 cm



salame, interrupted
Glazed stoneware
Ø 5 cm x 87 cm
Installation view





Salchicha 0 (tiny moments), 2024
Glazed stoneware
Variable measures
Installation view





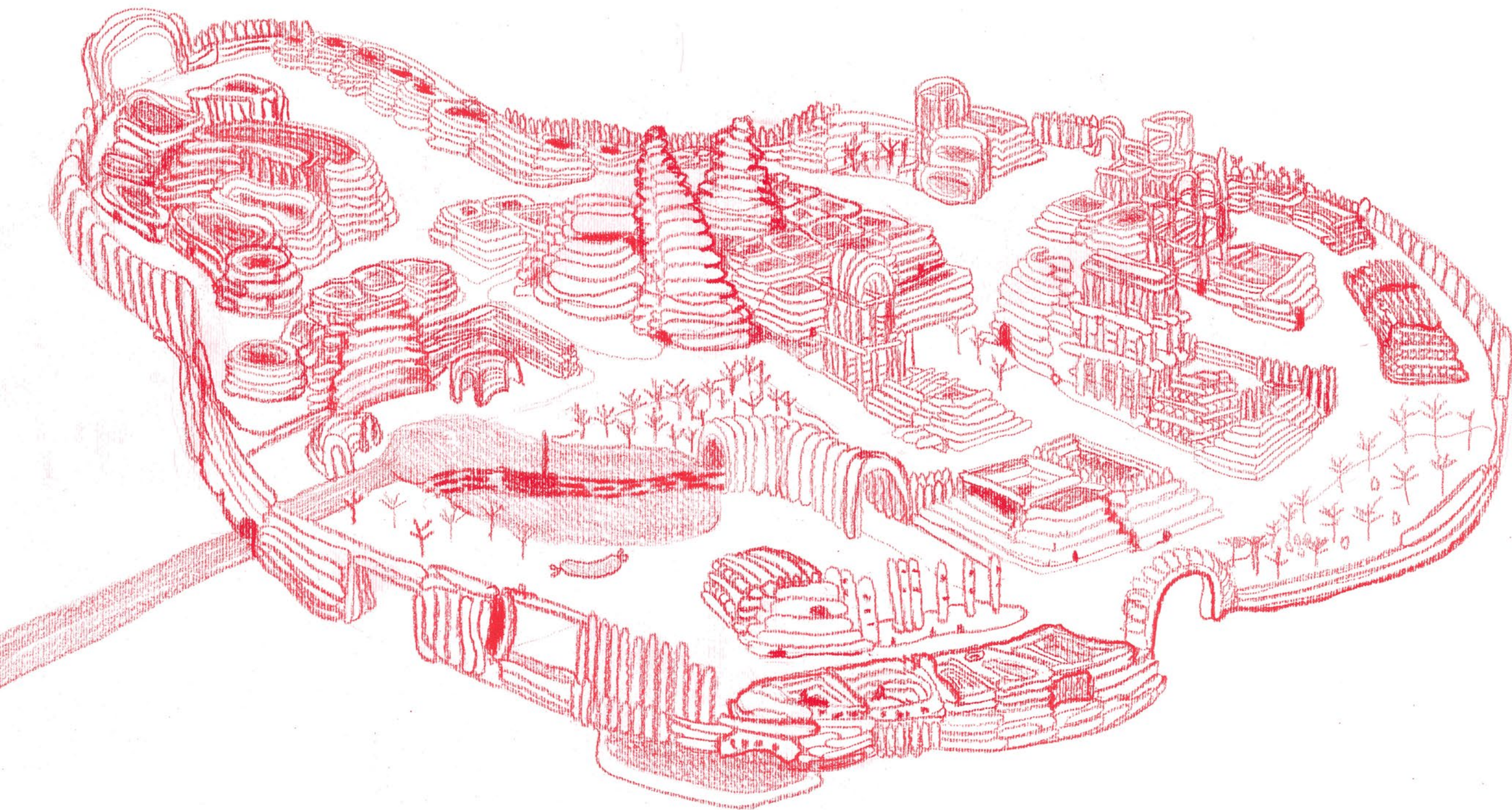
Salchicha 2 (afternoon's bath), 2024
Glazed stoneware
Variable measures
Installation view



Salchicha 3 (light as a feather), 2024
Glazed stoneware
Variable Measures
Installation view



Salchichas 6 y 7 (Sunday Brunch), 2024
Glazed stoneware
Dimensions variable
Installation view



Sausage City, 2023

Crayon on paper
50 x 70 cm



Torre Salchicha, 2022
Oil on plywood
105 x 84.5 cms



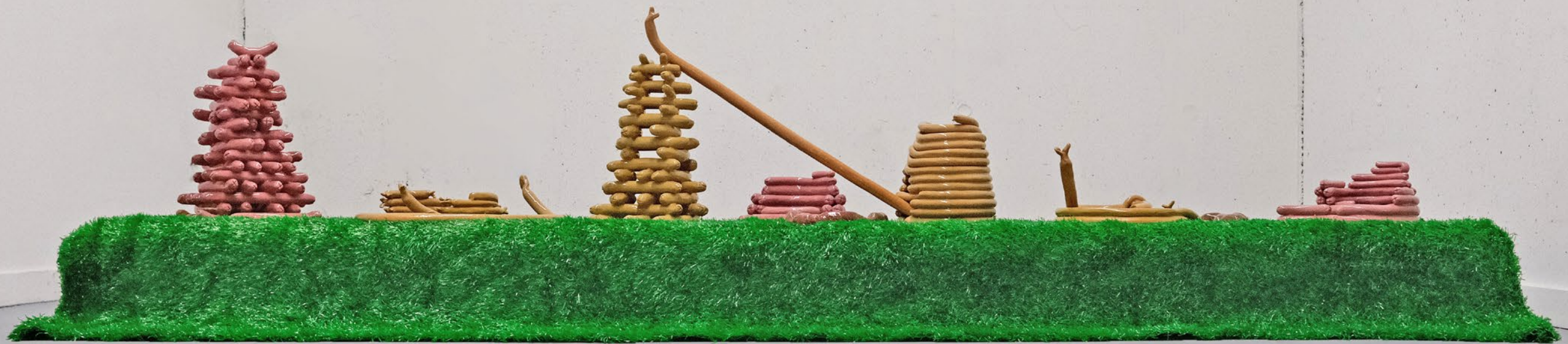
Tower of Egg, 2023
Oil on canvas
40 x 30 cm



Atome Salame, 2022
 Oil on plywood
 60 x 60 each



Katzenstadt, 2022
Oil on plywood
120 x 60 cm



Würstikon, 2024
Installation
Variable measures
Glazed stoneware on synthetic grass



Neighborhood Extract A, 2024
Glazed stoneware
30 x 18 x 18 cm



Neighborhood Extract B, 2024
Glazed stoneware
33 x 18 x 18 cm



Neighborhood Extract C, 2024

Glazed stoneware
20 x 15 x 15 cm



Neighborhood Extract D, 2024

Glazed stoneware
23 x 12 x 12 cm



Piggy Bear, 2024
Oil on canvas
35 x 50 cm

Photo Credits:

Alexander Canton

Duarte Perry

Samantha Zaugg

Massimiliano Rossetto